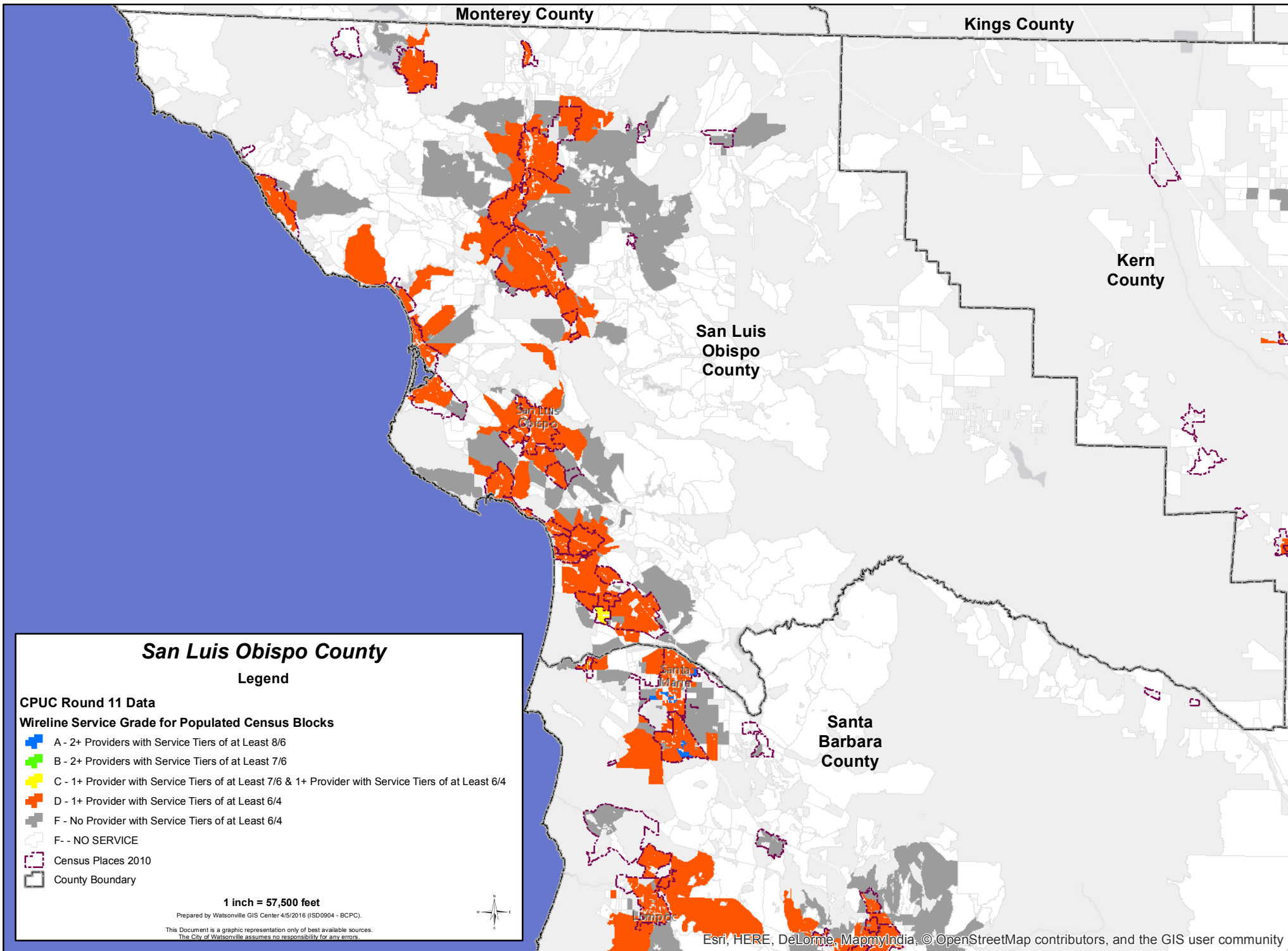


CPUC Round 11 Wireline Service Grades



San Luis Obispo County

Legend

CPUC Round 11 Data

Wireline Service Grade for Populated Census Blocks

- A - 2+ Providers with Service Tiers of at Least 8/6
- B - 2+ Providers with Service Tiers of at Least 7/6
- C - 1+ Provider with Service Tiers of at Least 7/6 & 1+ Provider with Service Tiers of at Least 6/4
- D - 1+ Provider with Service Tiers of at Least 6/4
- F - No Provider with Service Tiers of at Least 6/4
- F - NO SERVICE
- Census Places 2010
- County Boundary

1 inch = 57,500 feet

Prepared by Watsonville GIS Center 4/5/2016 (ISD0904 - BCPC).

This Document is a graphic representation only of best available sources.
The City of Watsonville assumes no responsibility for any errors.